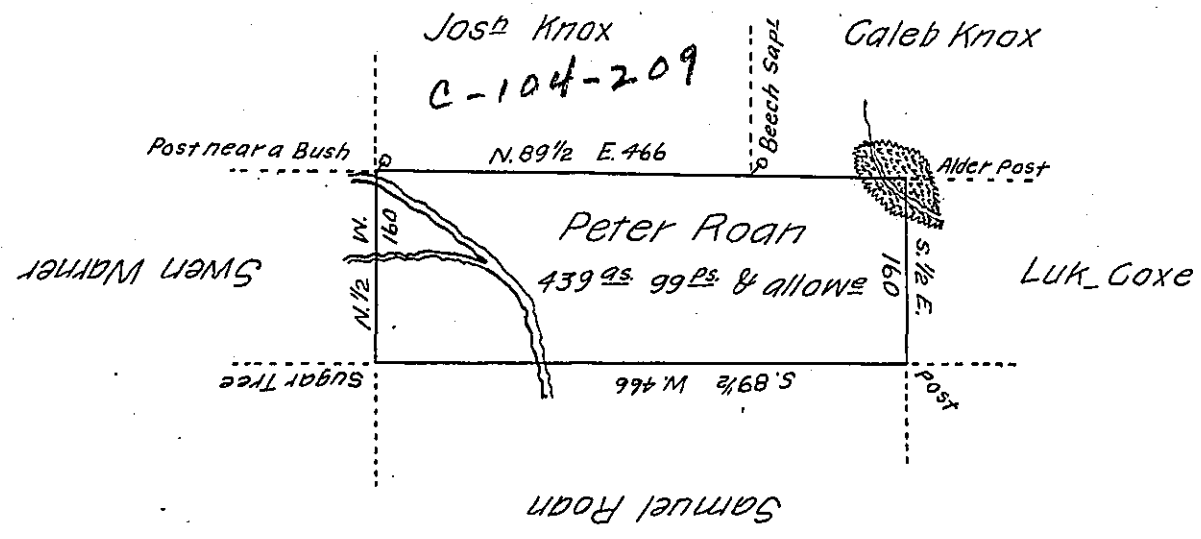


C-114-131



A Draught of a tract of land called—— Situate in the  
 County of Luzerne, adjoining Samuel Roan & others, surveyed the 29<sup>th</sup>  
 day of October 1792 for Peter Roan in pursuance of a warrant bearing  
 date the 3<sup>d</sup> day of April 1792, Containing Four hundred thirty-nine  
 Acres & ninety-nine perches & the allowance of Six 1/2 Cent. &c.

To Ant<sup>y</sup> Crothers, D. S.  
 Dan<sup>l</sup> Brodhead, Esq<sup>r</sup>  
 Surveyor General }

IN TESTIMONY that the above is a copy of the original remaining on file in  
 the Department of Internal Affairs of Pennsylvania, made  
 conformably to an Act of Assembly approved the 16th day of  
 February 1833, I have hereunto set my hand and caused  
 the Seal of said Department to be affixed at Harrisburg,  
 this eighteenth day of July, 1907.

*Henry Houck*  
 Secretary of Internal Affairs.